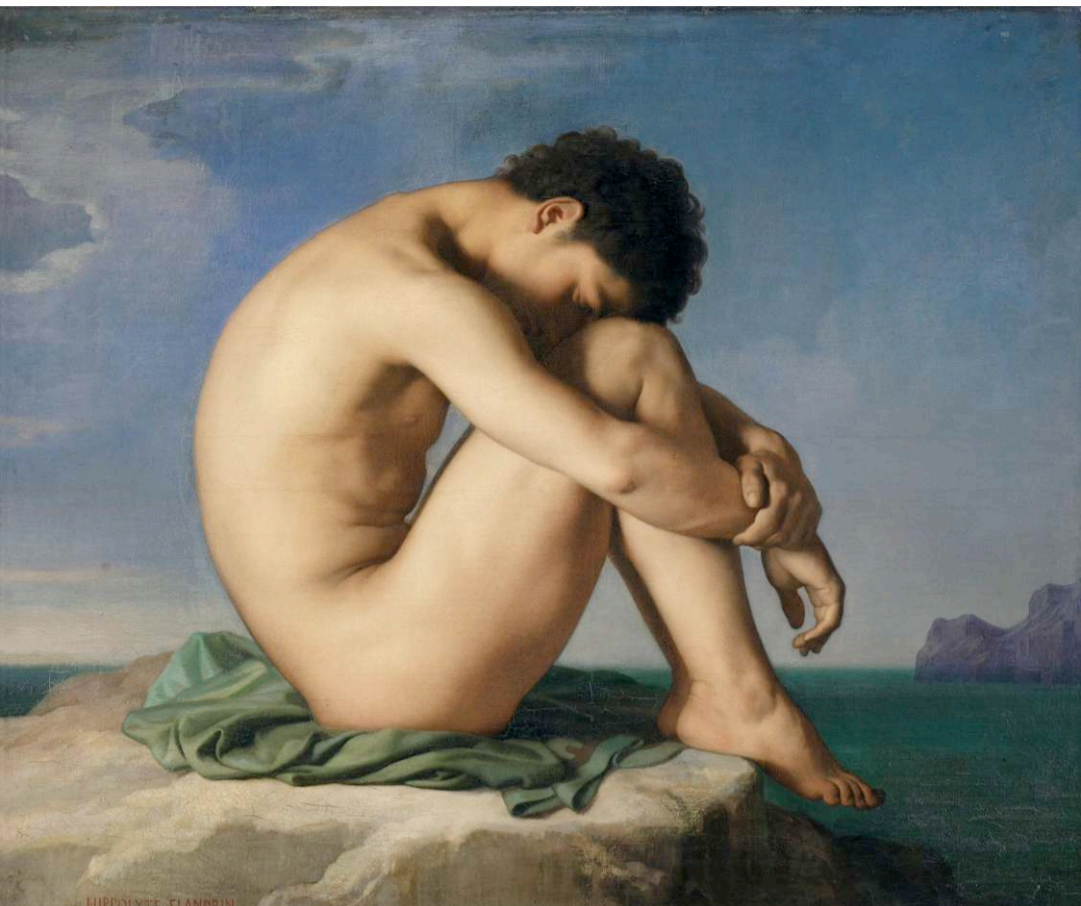




Università degli Studi di Napoli
"Federico II"



European
Reference
Networks



Hippolyte Flandrin - *Giovane uomo nudo seduto in riva al mare*

RESEARCH ADVANCES IN TESTICULAR CANCER

21 JUNE 2019

Università degli Studi di Napoli Federico II
Padiglione 1 Aula A
Via Sergio Pansini, 5
NAPOLI (Italy)

INFO

con il patrocinio di



SOCIETÀ ITALIANA
DI UROLOGIA ONCOLOGICA



Società Italiana
di Psico-Oncologia



Associazione Italiana di Oncologia Medica



GENERAL INFORMATION

Scientific Coordinator
Prof. Sabino De Placido
Prof.ssa Giovannella Palmieri

Scientific Secretariat
Dott.ssa Margaret Ottaviano
Dott. Mario Alberto Santomauro
Dott. Mario Giuliano

CME CREDITS

The Meeting has been accredited at Andromeda e20 srl (Provider code: 6065) for the following categories:
Medical Doctors - Surgeons: Oncologist, Radiologist, Endocrinologist, Pathologist, Urologist, Epidemiologist, Biologist, Biotechnologist, Pharmacist, Psychologist.

REGISTRATION

The participation in the meeting is free of charge. Anyway CME Credits will be limited to a restricted number of participants. The registration is compulsory and credits will be assigned on a first come first served basis.

ATTENDANCE CERTIFICATE

The attendance certificate will be distributed to all participants at the end of the Meeting. The CME certificate will be made available by the Provider Andromeda e20 srl 60 days after the meeting on their website. Notification will be sent by e-mail.



segreteria organizzativa e provider ecm
Andromeda E20 srl
Via Cimara 84 - 80129 Napoli
Ph +39 081 18634790
www.andromedae20.com
andromedae20@libero.it



08.15	Registration
08.30	Saluto delle Autorità A. Guida
08.50	Introduction S. De Placido, G. Palmieri, M. Giuliano
09.00 – 10:50	SESSION I: STAGE I DISEASE AND BIOLOGICAL STUDIES <i>Chairmen:</i> Giovannella Palmieri, Giovanni Rosti
09.00 – 09:40	Stage I management: a IGG observational trial Umberto Basso, Patrizia Giannatempo
09.40 – 10:10	Genetics and patterns of inheritance Eloisa Arbustini
10:10 – 10:30	miRNA Margaret Ottaviano
10:30 – 10:50	Malattia platinio resistente Pasquale Rescigno
10:50 – 11:10	Discussion
11:10 – 11:20	Coffee break
11:20 – 13:00	SESSION II: AVANCED DISEASE AND SPECIAL SUBTYPES <i>Chairmen:</i> Paolo Andrea Zucali, Paolo Pedrazzoli
11:20 – 11:50	G3 proposals, Italian analyses Ugo De Giorgi
11:50 – 12:10	PEB variation and toxicity Franco Nolé
12.10 – 12.30	Stromal tumors and rare pathological situations Maurizio Colecchia
12:30 – 13:00	Discussion
13:00 – 14:00	Lunch
14.00 – 16.30	SESSION III: FOLLOW-UP AND SURVEILLANCE <i>Chairmen:</i> Nicola Nicolai, Roberto Salvioni
14.00 – 14.30	Consensus follow-up, next steps and study proposals Giuseppe Luigi Banna
14:30 – 14:50	New insights on genetic and environmental causes Andrea Garolla
14:50 – 15:10	Impact of tumor markers for follow-up of nonseminoma Roberto Salvioni
15:10 – 15:25	Psychological impact Caterina Condello
15:25 – 15:40	Ruolo associazione pazienti nella ricerca - A.I.T.T. and Favo Domenico Di Nardo
15:40 – 16:10	Discussion
16:10 – 16:30	Conclusioni (G. Palmieri)